

# Ziehm Solo **FD**

Versatile design meets latest  
flat-panel technology



# FREEDOM TO IMAGE YOUR WAY.



## SmartDose

Best image quality. Minimized dose.

This comprehensive concept consists of a broad, clinically proven application portfolio to address the daily challenges of low dose and high image quality. With significant dose savings, Ziehm Imaging sets the benchmark in user-friendly adjustment of dose exposure<sup>1</sup>.

See below for the full list of applications and what they can do.



Neck Imaging



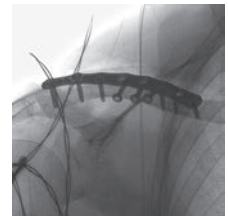
Wrist Imaging



Ankle Imaging



Foot Imaging



Shoulder Imaging

### The future of efficiency

## Latest flat-panel technology

Image quality and efficiency are the most important but also challenging factors in daily clinical routine. In comparison with conventional C-arms, the latest flat-panel technology achieves higher spatial resolution due to smaller pixel sizes combined with lower noise levels and a higher read-out speed at full resolution. True resolution, especially in the magnification modes, makes interpolation unnecessary, and therefore enables improved overall efficiency.



**LASER  
POSITIONING  
DEVICE**

Integrated in flat-panel and generator housing for accurate & dose-free positioning of C-arm



**PREMAG**

For exposure-free magnification of X-ray images



**REDUCTION  
OF PULSE  
FREQUENCY**

Manually or fully automatically to lower the accumulated dose



**VIRTUAL  
COLLIMATORS**

For exposure-free positioning of collimators



**ANATOMICAL  
PROGRAMS**

With automatic optimization of dose and image quality for best results



**LOW DOSE  
MODE**

In all anatomical programs for particularly dose-sensitive procedures, e.g. in pediatrics



### APPLICATIONS

Orthopedics, Trauma, Pain Management & more with the latest flat panel technology



### AFFORDABILITY

Lowest entry & ownership cost of any full size flat-panel detector system on the market



### FLEXIBILITY

165° of orbital movement & 34" of free space for easier patient coverage



### MAGNIFICATION MODE

Zero dose increase while retaining image quality



### All-in-one design

## The ultimate space saver

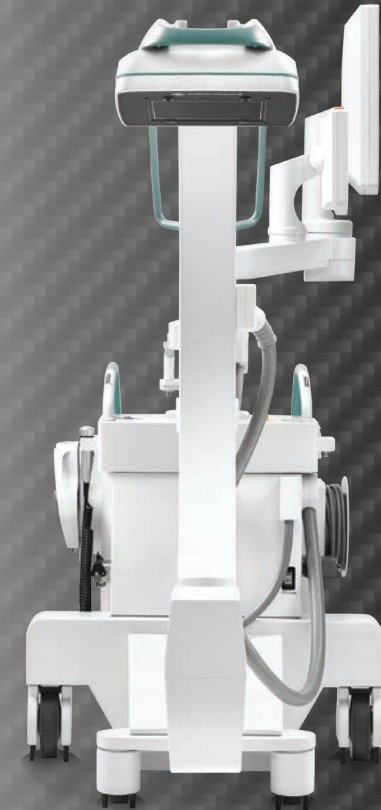
As the size of hospital and surgery center ORs decreases and equipment quantity rises, the demand for imaging systems with smaller footprints is growing. With its all-in-one design, the Ziehm Solo FD is one of the most compact C-arms for even the smallest treatment scenarios on the market – now equipped with the latest flat-panel technology to perform a broad portfolio of applications.



### Advanced clinical workflow

## Work smarter. Not harder.

Take advantage of 165° orbital movement for easier patient coverage. Increase safety as the wireless footswitch reduces the amount of cables on the OR floor. Ensure easy and unmistakable communication thanks to color-coded handles. In the face of time and efficiency pressure, compatible clinical workflows help to operate the C-arm in an easy and intuitive way. The Solo Center is a touchscreen with a modular software architecture, ensuring maximum flexibility. Store images wirelessly to the PACS from any location. With the Ziehm Wireless Video option, live images can be transferred to wall-or ceiling mounted monitors in real-time.



To automatically analyze the area of interest & minimize dose while optimizing image quality



For intelligent, fast regulation of pulse rate to lower the dose level



To reduce dose in pediatric & other dose-sensitive procedures



For reduced skin entrance dose without compromising on image quality



To display fast-moving objects like guide wires & even the smallest vessels in razor-sharp image quality



For large patients – with no additional increase in dose

For a full list of specifications, visit [orthoscan.com](http://orthoscan.com).

## MONITOR

Display size	27" Splitscreen
Ziehm Viewing Station	Optional

## IMAGING TECHNOLOGY

Type	Flat Panel
Detector size	21cm x 21cm

## X-RAY GENERATOR

Pulsed fluoroscopy kV range	40 - 120 kV
Pulsed fluoroscopy mA range	0.2 - 20 mA
Pulse rates	25, 12.5, 8, 4, 2, 1 pps

## ELECTRICAL

Power supply	100-240 VAC (± 10 %), 50/60 Hz
--------------	-----------------------------------

## IMAGE PROCESSING

Image capacity	100,000
Wireless communication	Optional
Multifunction wireless foot switch	Optional
Printer	Optional
DVI (external monitor)	Optional

## DIMENSIONS

Weight	765 lb (± 3%)
Height	69" - 85"
Width	31.5"
Length	67" - 76"



## Nationwide service coverage

Nationwide service coverage is available with 24/7 phone support from our service team. Our service programs cover the lifespan of our mobile C-arms, ranging from periodic maintenance to complete coverage programs. You can depend on us for flexible, fast, and reliable service.

- ✓ Toll-free service
- ✓ Comprehensive service programs
- ✓ 24/7 support

Call: **866.949.4346**



Orthoscan has partnered with Ziehm Imaging to distribute the Ziehm Solo FD



[www.orthoscan.com](http://www.orthoscan.com)  
14555 N 82<sup>nd</sup> St. Scottsdale, AZ 85260

480.503.8010  
480.503.8011

