



SIEMENS

[siemens.com/siremobil](https://www.siemens.com/siremobil)

The compact all-rounder for surgical imaging

SIREMOBIL Compact L

A synonym for efficient performance

Proven for its reliability and ease of use in intraoperative imaging, the multipurpose Siemens C-arm SIREMOBIL Compact L is the compact all-rounder for surgical imaging. With its new digital 1K² imaging chain, it supports a large spectrum of X-ray-based surgical applications in orthopedics, trauma and vascular surgery, pain management, and ambulatory care.

Thanks to its compact and ergonomic design, SIREMOBIL Compact L is particularly easy to handle and operate. This translates into accelerated workflow and ultimately into noticeable time and cost savings in your daily work.



SIREMOBIL

Your benefits at a glance

Built for easy, user-friendly workflow

- Start-up time of only 40 seconds
- Well-conceived control concept including an easy-to-understand user interface
- Effortless navigation through patient files, images, and clinical results
- Most important functions can be selected with a single keystroke

Shaped for advanced ergonomic handling

- Counterbalanced C-arm with a large orbital rotation of 130° and integrated image intensifier handle
- Excellent patient access through surpassing values in free space, immersion depth, and overscan
- Intelligent color coding of brakes, handles, and scales for fast and precise positioning
- Space-saving, lightweight trolley for easy maneuverability



Compact L

Designed for high-quality imaging at low dose

- Consistent digital 1K² imaging chain
- Extended fluoro times of over 50 minutes
- Siemens CARE* initiative for lowest possible dose
- MEMOSKOP CX imaging system for individual storage requirements from 25 to 5,000 images
- Comprehensive connectivity for image storage and data transfer including CD writer, USB interface, and DICOM network interface
- External monitor connection for duplication of the live monitor or the reference monitor

Engineered for reliability

- Renowned for reliable performance and versatility in mobile surgical imaging
- In daily use by convinced professionals all over the world
- Wide range of flexible service and support options provides high uptime and long system life

* Combined Applications to Reduce Exposure (CARE), a Siemens initiative for dose reduction

Built for easy, user-friendly handling

“

I am able to acquire higher-quality images than I ever could on previous systems, so I can make more informed decisions for my patients. It has also had a positive effect on my practice. Referring physicians that I work with know I have this system, so I've seen an increase in patient referrals since I've been using it. It is innovative, reliable, and easy to use – three qualities that are critically important in treating patients.

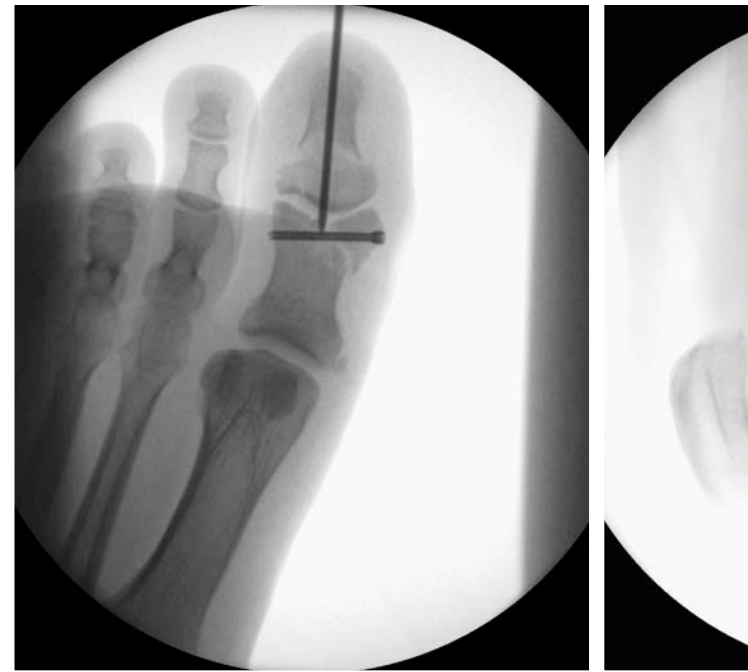
Dr. Vladimir Zlatnik,
Neurology Group PLLC,
Flushing, NY, USA



Designed for high-quality imaging at low dose

“As a specialist in hand surgery, I particularly appreciate three points of the SIREMOBIL Compact L: the low radiation exposure for patients and OR staff, the wide working space, and the excellent image quality.

Daisuke Yamauchi,
Fukui Prefecture Saiseikai Hospital,
Fukui City, Japan



Exceptional image quality

SIREMOBIL Compact L features a new, digital 1K² imaging system with ideally matched components. Together with its mu-metal shielded 23 cm (9") image intensifier, the imaging system offers high brightness and high contrast. Furthermore, two high-resolution TFT monitors display excellent, flicker-free images and provide a more than 170° viewing angle, horizontally as well as vertically. While the left monitor shows the current live image in full size, the right monitor displays the reference image and thumbnails, representing a preview of single images and/or preselected dynamic runs. A smart combination that allows for fast image review and smooth workflow.

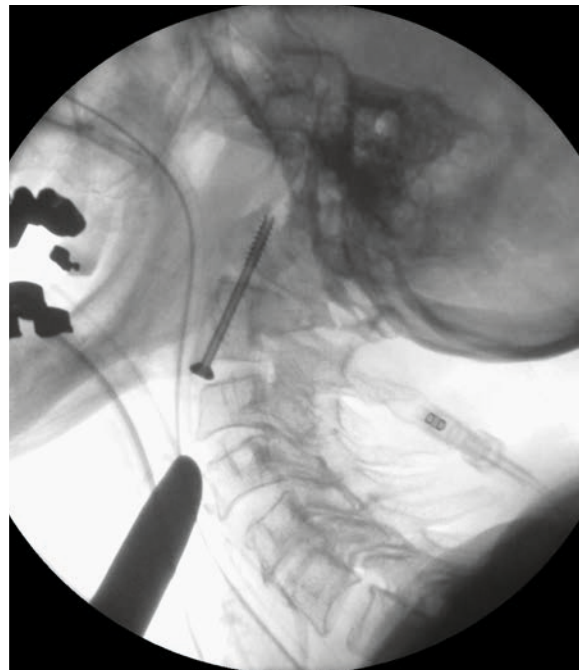
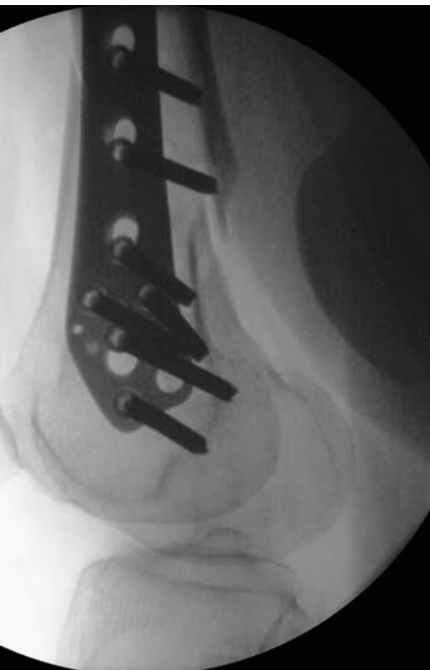
Beyond that, the uniquely designed X-ray tube supports extended fluoro times of more than 50 minutes – at the lowest possible dose. This is, for example, especially suited for thoracic imaging applications, such as the placement of pacemakers, which require exceptionally long fluoro times.

As little dose as possible

SIREMOBIL Compact L follows the Siemens CARE (Combined Applications to Reduce Exposure) initiative, which helps to reduce dose for both clinicians and patients: The collimator locations can be displayed on LIH (Last Image Hold) to avoid additional radiation during collimator adjustments. Apart from that, the C-arm can be positioned with the help of optional integrated laser light localizers. Moreover, pulsed fluoroscopy, which is standard on SIREMOBIL Compact L, can result in significant dose reductions, without compromising the image quality, depending on the selected pulse rate.

An optional dose-measuring chamber* determines the DAP (Dose Area Product) of the fluoroscopy field. The DAP result is displayed on the live monitor for easy viewing and increased dose awareness and can also be documented on hardcopy images. Alternatively, the display and documentation of air kerma rate and cumulative air kerma value is possible.

* Required standard in some countries



Storage capabilities and connectivity that really pay off

SIREMOBIL Compact L comes with the renowned MEMOSKOP CX imaging system, which offers individual storage capacities from 25 to 5,000 images. For comfortable playback of image series, "Auto Loop" is a standard feature on continuous fluoroscopy, pulsed fluoroscopy, and subtraction.

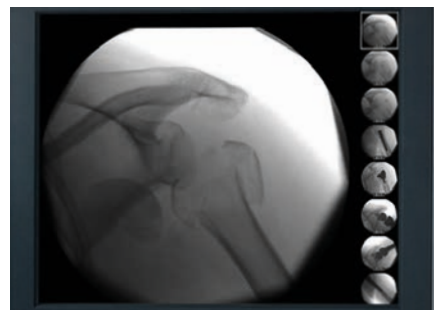
SIREMOBIL Compact L also includes a CD drive. The optional CD-writing functionality helps you store your images or make them available for other viewing or imaging systems. Another convenient interface is the USB port, for image export in JPEG or BMP format.

Comprehensive DICOM (Digital Imaging and Communication) options including DICOM Send/ Receive, Storage Commitment, Print, Worklist, and Query/Retrieve and the optional connection of an external monitor make SIREMOBIL Compact L a highly versatile system, which is able to meet today's operational and networking demands.

The integrated CD drive allows for easy and reliable data storage



Right monitor with reference image and thumbnails for preview of single images and/or preselected dynamic runs





SIREMOBIL Compact L

Good to know it's a Siemens system

Maneuvering the C-arm is facilitated through consistent ergonomic design

“

Within the last seven years, the SIREMOBIL Compact L has helped us perform thousands of surgical procedures with minimally invasive techniques. It has contributed to optimizing the duration of surgical procedures, reducing costs for both patient and hospital, and providing better and faster recovery to our patients. We widely recommend this unit.

Dr. Roberto Ramírez Rivera,
Professor of Traumatology and Orthopedics,
Facultad de Medicina de la Universidad
Autónoma de Coahuila,
Saltillo, Coahuila, Mexico



Dependable values make the difference

SIREMOBIL Compact L stands for the values Siemens healthcare solutions are generally renowned for: reliability, exceptional performance, and unequalled durability. That's why SIREMOBIL Compact L is well-known around the world for its exceptional customer satisfaction. This improved generation of the system will further contribute to the wide acceptance the system enjoys. SIREMOBIL Compact L is present in healthcare facilities all over the globe, as it offers a level of flexibility and uptime that provides surgeons and OR staff with the fullest and proper support.

There is more to a Siemens system than the system itself

But support has yet another dimension with SIREMOBIL Compact L: Siemens provides a multitude of programs and support for the continuous development of skills, productivity, and technology right from the moment of purchase and makes every effort to help enhance performance, productivity, and patient satisfaction – the factors that count most in modern healthcare. What's more, Siemens provides a comprehensive range of service options for medical hardware and software, thus enabling increased system availability, optimized performance, and workflow efficiency.



“

SIREMOBIL Compact L is ideally suited for spinal surgery. It convinces through markedly easy handling, high reliability, and an imaging quality that is absolutely suitable for spinal surgery. Thus, it can be used for anterior and posterior operations of the entire spine, from craniocervical to lumbosacral.

Dr. Florian Ringel,
Senior Physician, Department of Neurosurgery,
Klinikum rechts der Isar der Technischen
Universität München, Munich, Germany

A holistic view of healthcare

Healthcare expertise that adds value

Siemens is one of the first companies to bring together medical imaging, laboratory diagnostics, and medical information technology, all supported by consulting and services. Innovations from Siemens combine all the various fields on a state-of-the-art level to pave the way for earlier prevention, more specific diagnosis, and precise, efficient therapy – thus enhancing patient care, clinical workflow, and the profitability of healthcare facilities.

As one of the world's leading suppliers of healthcare systems and solutions, Siemens is a partner that provides honest, fair, and comprehensive expert advice, long-term support across the board, plus the reliability, experience, and stability of a company with a 130-year history in healthcare. Siemens supplies products and solutions for the entire range of patient care from a single source – from prevention and early detection to diagnosis and treatment on to aftercare. By optimizing clinical workflows for the most common diseases, Siemens makes healthcare faster, better, and more costeffective.

“SIREMOBIL Compact L has been in use in our hospital for about four years now, and the system has performed very well and has proven to be very stable. It is easy to operate and ideally suited to support a large number of surgical image acquisitions. Its ergonomic design is very useful and helps improve communication in a busy OR environment.

Dr. Luo Cong Feng,
Head of Trauma Department,
Shang Hai No. 6 Hospital, Shanghai, China



On account of certain regional limitations of sales rights and service availability, we cannot guarantee that all products/ services/features included in this brochure are available through the Siemens sales organization worldwide. Availability and packaging may vary by country and are subject to change without prior notice.

The information in this document contains general descriptions of the technical options available and may not always apply in individual cases.

Siemens reserves the right to modify the design and specifications contained herein without prior notice. Please contact your local Siemens sales representative for the most current information.

In the interest of complying with legal requirements concerning the environmental compatibility of our products (protection of natural resources and waste conservation), we may recycle certain components where legally permissible. For recycled components we use the same extensive quality assurance measures as for factory-new components.

Any technical data contained in this document may vary within defined tolerances. Original images always lose a certain amount of detail when reproduced.

Siemens Healthcare Headquarters

Siemens Healthcare GmbH
Henkestr. 127
91052 Erlangen
Germany
Phone: +49 9131 84-0
siemens.com/healthcare